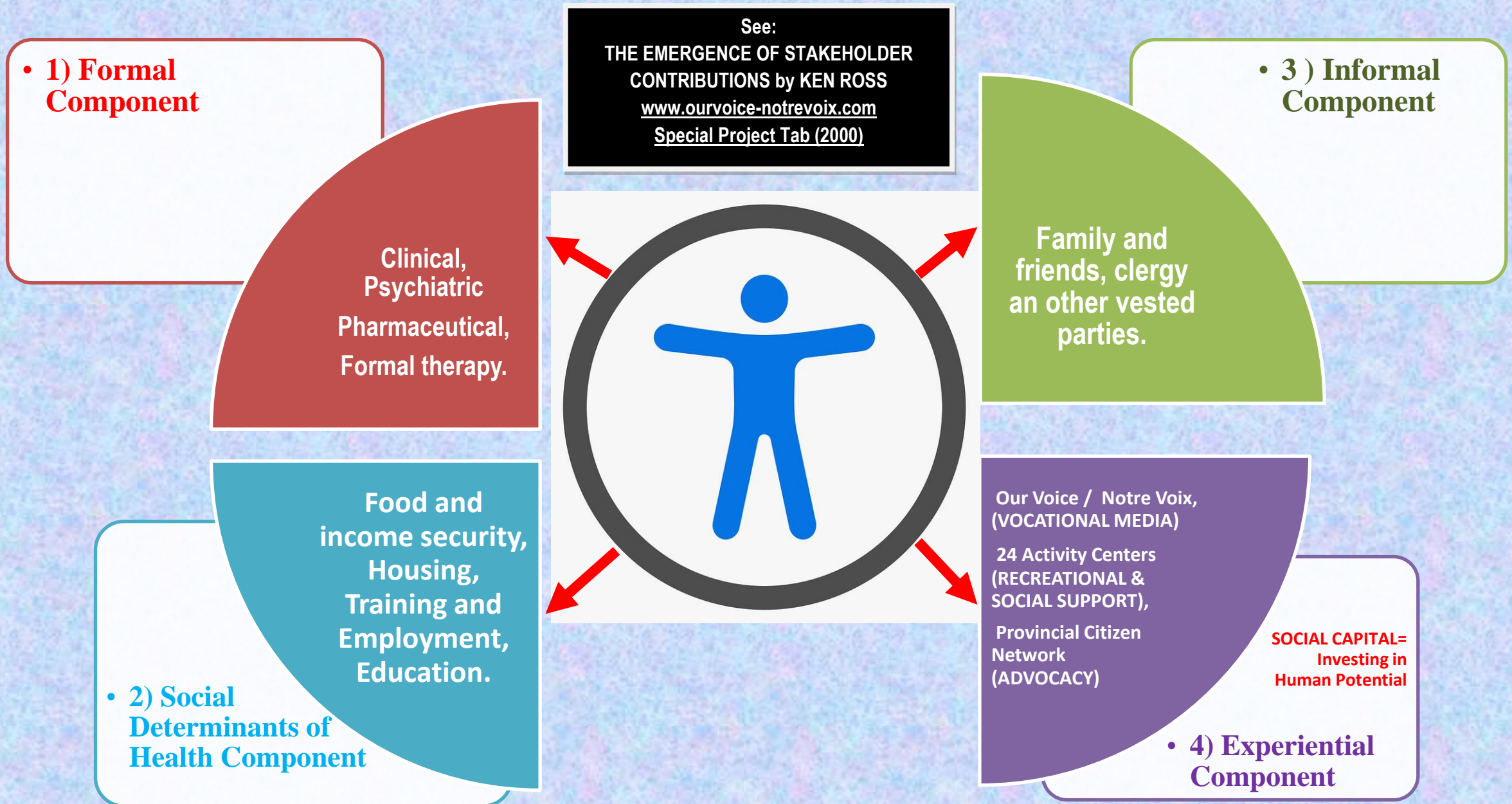


# NEW BRUNSWICK'S MENTAL HEALTH COMMUNITY RESOURCE BASE

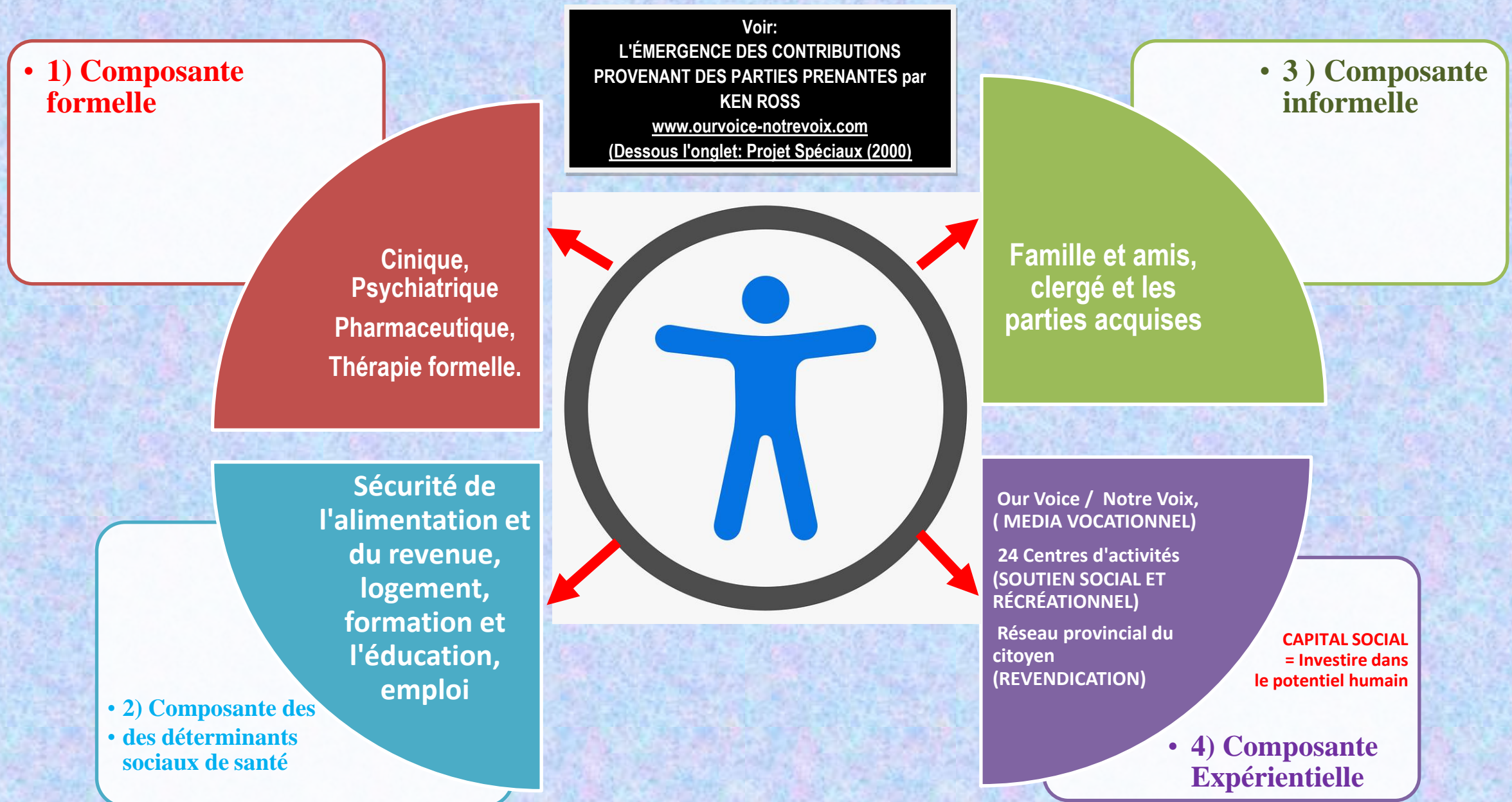


ADDITIONAL REFERENCES: Trainor, J. & Church, K. (1984) *A Framework for Support for People with Severe Mental Disabilities*, Toronto, Canadian Mental Health Association

As to reflect New Brunswick context, this Mental Health Community Resources Base table was designed by OUR VOICE / NOTRE VOIX

[www.ourvoice-notrevoix.com](http://www.ourvoice-notrevoix.com) (Under the Special Project Tab - 2025)

# LA BASE DES RESSOURCES COMMUNAUTAIRES EN SANTÉ MENTALE DU NOUVEAU-BRUNSWICK



RÉFÉRENCES SUPPLÉMENTAIRES: Trainor, J. & Church, K. (1984) *A Framework for Support for People with Severe Mental Disabilities*, Toronto, Canadian Mental Health Association

Afin de refléter le context Néo-Brunswickois, ce tableau de cette Base des ressources communautaires en santé mentale fut conçu par OUR VOICE / NOTRE VOIX

[www.ourvoice-notrevoix.com](http://www.ourvoice-notrevoix.com) (Dessous l'onglet Projet Spéciaux 2025)